



ROGEDIL SERVIZI S.r.l.

PRESENTATION

Rogedil Servizi Srl was established in 1982 thanks to the cooperation and experience of professionals and entrepreneurs, and developed as an engineering company, obtaining assignments from public and private institutions.

With its Technical Director, Engineer Franco Portoghesi, from the late 1980s until today the company has acquired a long-standing experience in studies and designs for engineering works (including integrated engineering) with every level of detail, as well as services related to the latter, including Works Management, technical and administrative control and testing.

In the 1990s, also by recruiting young engineers, the company developed activities in the field of infrastructures (roads and railways) and hydraulic works (water supply systems and purification plants).

From the early 2000s to today, it has specialised in maritime works related to commercial and passenger ports, as well as safety coordination activities during both the planning stage and the implementation stage.

The Technical Office of Rogedil Servizi consists of professionals with proven expertise and relational skills, who have often worked in close cooperation and have obtained excellent results while also being able to meet the Customer's needs and intervening, when necessary, to solve issues related to the procedures that would characterise the various stages of the project.

The Company is also supported by external collaborators with proven experience in the fields of geology, geotechnology and marine weather forecasting, as well as professionals specialised in carrying out vegetation surveys, environmental monitoring such as analysing "atmosphere" and "noise" components, forecasting of noise impact, and model simulations of emissions into the atmosphere based on project and plan analysis.

The Company uses the BIM (Building Information Modeling) design process, which allows it to create, analyse and manage virtual models in order to develop integrated planning to support all process stages, thus ensuring more efficient analysis and monitoring compared to conventional processes; to manage at best the complex aspects of construction and subsequent management and maintenance.

All the activities of Rogedil Servizi are carried out by adopting the Company's Quality Management System (QMS), now consolidated, which is implemented to control planning contracts. This is a control system based on adopting documented procedures, which define the ways in which the entire implementation process of the service is monitored. The company has obtained ISO-9001 certification for engineering activities and Works Management from the Certification Body RINA.

TEAM

Board

Guido Azzopardi – President

Edgardo Azzopardi – CEO

Technical Office:

Technical Director Engineer Franco Portoghesi

Engineer Alessandro Guerra

Engineer Mariella Cosimi

Engineer Cristiano Falasconi

Engineer Giovanni Pesari

Engineer Eugenio Lupi

Engineer Leonardo Avincola

Architect Francesco Maria Azzopardi

Engineer Giovanni Stendardo

Dott.sa Francesca Ravaldini

Surveyor Paolo Sormani

Surveyor Dolores Pias

Administrative Office

Accountant Elisa Palladino

PRODUCTION VALUE

YEAR 2005	€	1.794.919,00
YEAR 2006	€	4.024.212,00
YEAR 2007	€	5.699.803,00
YEAR 2008	€	4.361.590,00
YEAR 2009	€	1.790.545,00
YEAR 2010	€	1.769.993,00
YEAR 2011	€	2,061,284.00
YEAR 2012	€	2,634,694.00
YEAR 2013	€	3,796,686.00
YEAR 2014	€	2,619,513.00
TOTAL		€ 30,553,239.00



INDICE

COMPETITION		
1.	TWO STAGE OPEN PROCEDURE DESIGN CONTEST FOR THE CONSTRUCTION OF THE NEW SCIENCE CENTRE OF CITTÀ DELLA SCIENZA, NAPOLI	4
2.	INTERNATIONAL DESIGN CONTEST PIANO PARTICOLAREGGIATO OF PRG CONSORTILE, GAETA	4
3.	TWO STAGE OPEN PROCEDURE DESIGN CONTEST FOR THE RENOVATION OF THE HISTORICAL WATERFRONT OF CIVITAVECCHIA	5
SHOPPING BUILDINGS		
1.	THE INTERNATIONAL NAUTICAL AND SPORTS SHOPPING CENTRE, GAETA	5
OFFICE BUILDINGS		
1.	DOCK, GUARDIA DI FINANZA BASE AND DETACHMENT OF VIGILI DEL FUOCO BASE, GAETA	6
2.	ASSIGNMENT TO REFURBISH THE HEADQUARTERS OF TELECOM ITALIA SPA LOCATED IN ACILIA AND ROMA - PROJECT 10 CITTÀ	6
SPORT FACILITIES		
1.	SPORTING CENTRE, GAETA	7
WINERIES		
1.	AMINISTRATIVE BUILDING, BOTTLING AND VINIFICATION AREA OF REGALEALI WINERY	7
2.	BARRIQUES CELLES AREA OF REGALEALI WINERY	8
3.	BANFI WINERY	8
4.	CONNECTION, BANFI WINERY	9
5.	GULFI WINERY	9
INFRASTRUCTURES		
1.	AREA FOR SMES AND ARTISAN COMPANIES INDUSTRIAL BUILT-UP AREA OF PENITRO	10
2.	INFRASTRUCTURAL INTERVENTION IN AREAS G1W AND G2W - REAR OF THE WEST QUAY OF THE PORTO CANALE OF CAGLIARI	10
3.	GATE OF THE COMMERCIAL PORT OF GAETA, ROUNDABOUT AND UNDERPASS	11
4.	ROUTINE MAINTENANCE OPERATIONS ON THE CARRIAGEWAY IN THE STRETCH OPPOSITE QUAYS 27 AND 28 - PORT OF CIVITAVECCHIA	11
HYDRAULIC ENGINEERING		
1.	CONSOLIDATION OF THE DERIVATION OF PERTUSO - WATER SUPPLY INTERVENTIONS	12
RAILWAY INFRASTRUCTURE		
1.	REACTIVATION AND ELECTRIFICATION OF THE FORMIA - GAETA RAILWAY LINE	13
2.	RAILWAY CONNECTION KM 1+109,54 ROMA - CASSINO RAILWAY LINE, ANAGNI	13
PORT		
1.	STRATEGIC WORKS FOR THE PORT OF CIVITAVECCHIA: RELOCATION OF THE SHIPYARDS LOCATED IN THE BUCA DI NERONE AREA	14
2.	STRATEGIC WORKS FOR THE PORT OF CIVITAVECCHIA: EXTENSION OF THE COLOMBO BREAKWATER, RO-RO DOCK, SERVICES DOCK	14
3.	STRATEGIC WORKS FOR THE PORT OF CIVITAVECCHIA: COMPLEMENTARY WORKS OF THE SQUARES BEHIND DOCKS 27 AND 28- RO-RO AND THE TERMINAL CONSTRUCTION	15
4.	STRATEGIC WORKS FOR THE PORT OF CIVITAVECCHIA: SUPPLEMENTARY WORKS FOR THE NORTH DREDGING RECLAMATION AREA	15
5.	REDEVELOPMENT WORKS OF THE MONTESECCO DOCK, GAETA	16
6.	MARINA DI GAETA	16
7.	ROMA MARINA YACHTING, CIVITAVECCHIA	17
8.	TECHNICAL AND FUNCTIONAL MODERNISATION OF THE COMMERCIAL PORT OF GAETA	18
URBAN PLANNING		
1.	PIANI PARTICOLAREGGIATI DEL PRG CONSORTILE, GAETA	19



COMPETITIONS

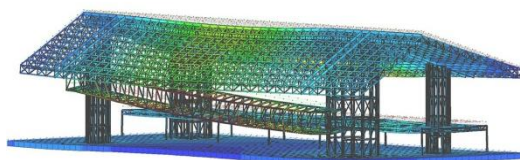
1. TWO STAGE OPEN PROCEDURE DESIGN CONTEST FOR THE CONSTRUCTION OF THE NEW SCIENCE CENTRE OF CITTÀ DELLA SCIENZA, NAPOLI

Fondazione Idis (Italian Foundation of Architects and Engineers)

2015

Structural modelling

4° classify with special mention



2. INTERNATIONAL DESIGN CONTEST PIANO PARTICOLAREGGIATO OF PRG CONSORTILE, GAETA

Consorzio per lo Sviluppo Industriale Sud Pontino

2011

Collaboration with Prof. Arch. F. Purini (ATI)

Urban planning

1° prize



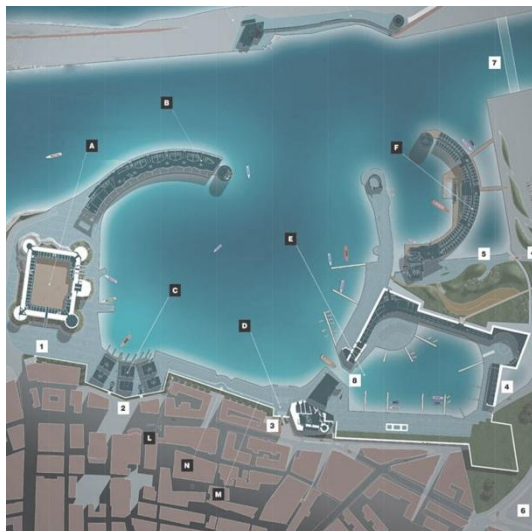
3. TWO STAGE OPEN PROCEDURE DESIGN CONTEST FOR THE RENOVATION OF THE HISTORICAL WATERFRONT OF CIVITAVECCHIA

Port Authority of Civitavecchia, Fiumicino and Gaeta
2003

Collaboration with Prof. Arch. P. Portoghesi (ATI)

Coordination

1° prize



SHOPPING BUILDINGS

1. THE INTERNATIONAL NAUTICAL AND SPORTS SHOPPING CENTRE, GAETA

Genera Consulting S.r.l. – Numana

2012 - in progress

Total cost of works € 34,145,992.00

Design development and safety coordination during designing

Environmental impact assessment (VIA)



SPORT FACILITIES

1. SPORTING CENTRE, GAETA

Port Authority of Civitavecchia, Fiumicino and Gaeta
2006

Total cost of works € 19,300,000.60

Preliminary design



WINERIES

1. AMINISTRATIVE BUILDING, BOTTLING AND VINIFICATION AREA OF REGALEALI WINERY

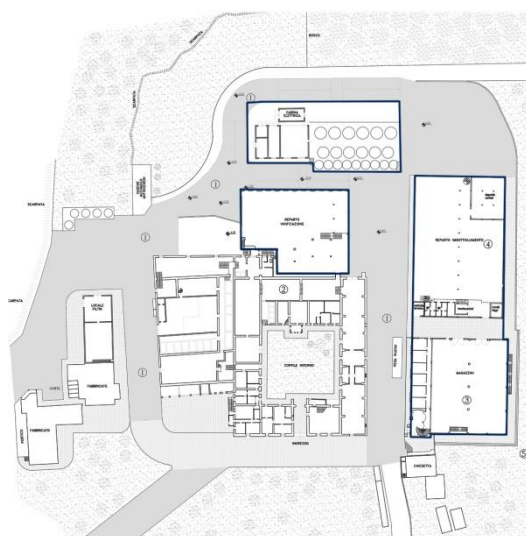
Conte Tasca d'Almerita S.p.A.

1998-2001

Total cost of works € 6,185,604.28

Collaboration with Enoconsult S.r.l.

Architecture and structure design



2. BARRIQUES CELLES AREA OF REGALEALI WINERY

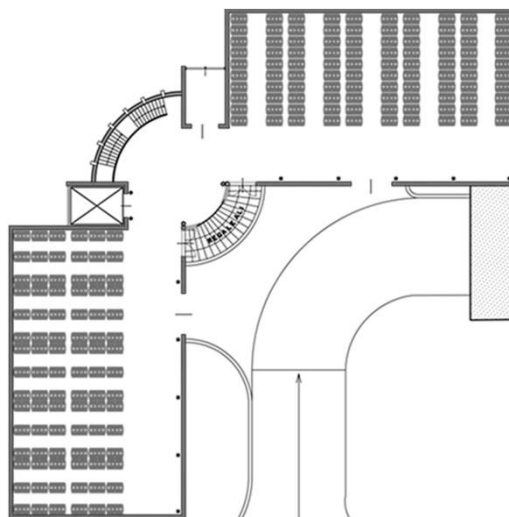
Conte Tasca d'Almerita S.p.A.

2000

Total cost of works € 8,009,670.80

Collaboration with Enoconsult S.r.l.

Architecture and structure design



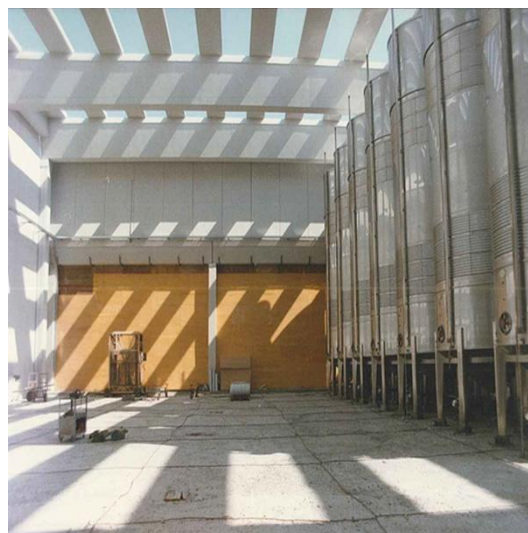
3. BANFI WINERY

BANFI S.r.l.

1982-2008

Collaboration with Enoconsult S.r.l.

General Contractor



4. CONNECTION, BANFI WINERY

BANFI S.r.l.

2005

Collaboration with Enoconsult S.r.l.

Architecture and structure design, construction supervisor



5. GULFI WINERY

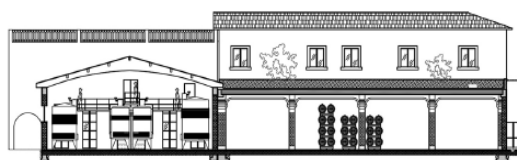
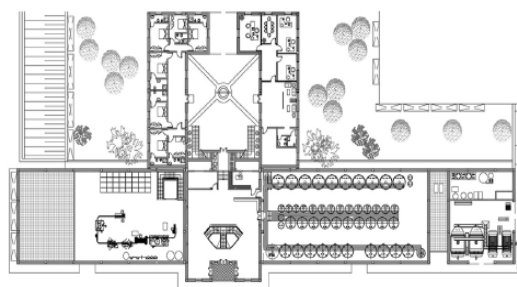
GULFI

2002-2005

Total cost of works € 9,383,735.15

Collaboration with Enoconsult S.r.l.

Architecture and structure design



ROGEDIL SERVIZI S.r.l.

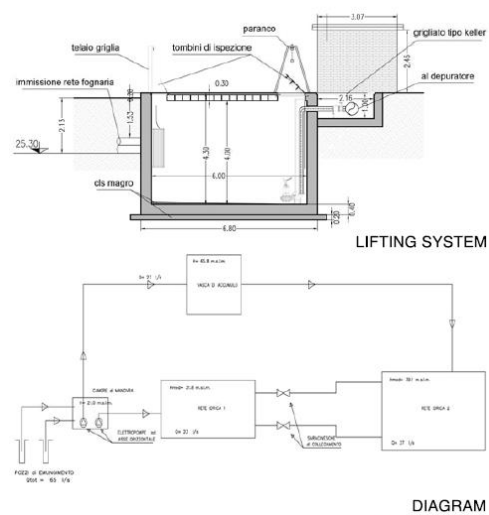
INFRASTRUCTURE

1. AREA FOR SMES AND ARTISAN COMPANIES INDUSTRIAL BUILT-UP AREA OF PENITRO

Consorzio per lo Sviluppo Industriale Sud Pontino
2003-2006

Total cost of works € 1,390,000.00

design development and construction design



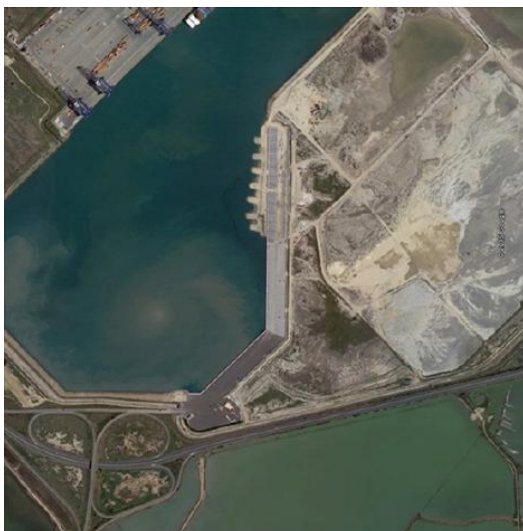
2. INFRASTRUCTURAL INTERVENTION IN AREAS G1W AND G2W - REAR OF THE WEST QUAY OF THE PORTO CANALE OF CAGLIARI

Port Authority of Cagliari

2012 - in progress

Total cost of works € 11,045,371.00

Preliminary design, design development and safety coordination during designing

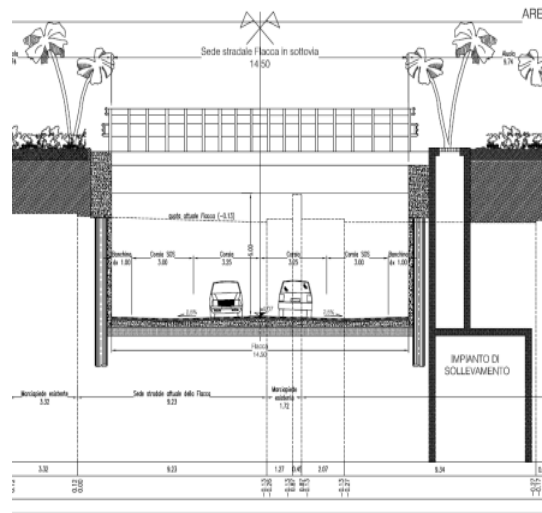
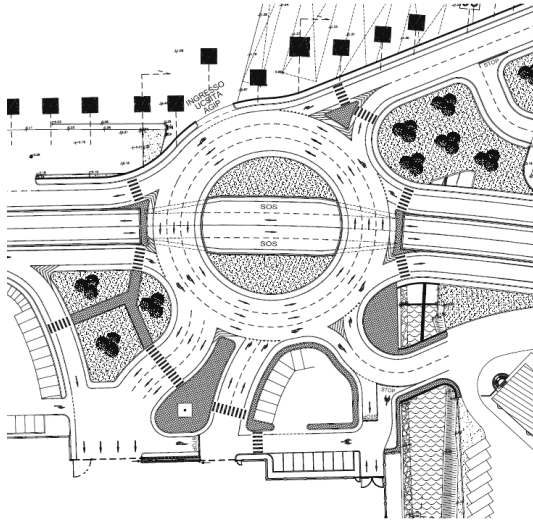


3. GATE OF THE COMMERCIAL PORT OF GAETA, ROUNDABOUT AND UNDERPASS

Port Authority of Civitavecchia, Fiumicino and Gaeta
2005-2008

Total cost of works € 12 millions ca

Preliminary design, Design development



4. ROUTINE MAINTENANCE OPERATIONS ON THE CARRIAGEWAY IN THE STRETCH OPPOSITE QUAYS 27 AND 28 - PORT OF CIVITAVECCHIA

Port Mobility S.p.A.

2014

Total cost of works € 950,911.88

Preliminary design, design development and safety coordination during designing. Construction supervisor and safety coordination during construction

2015

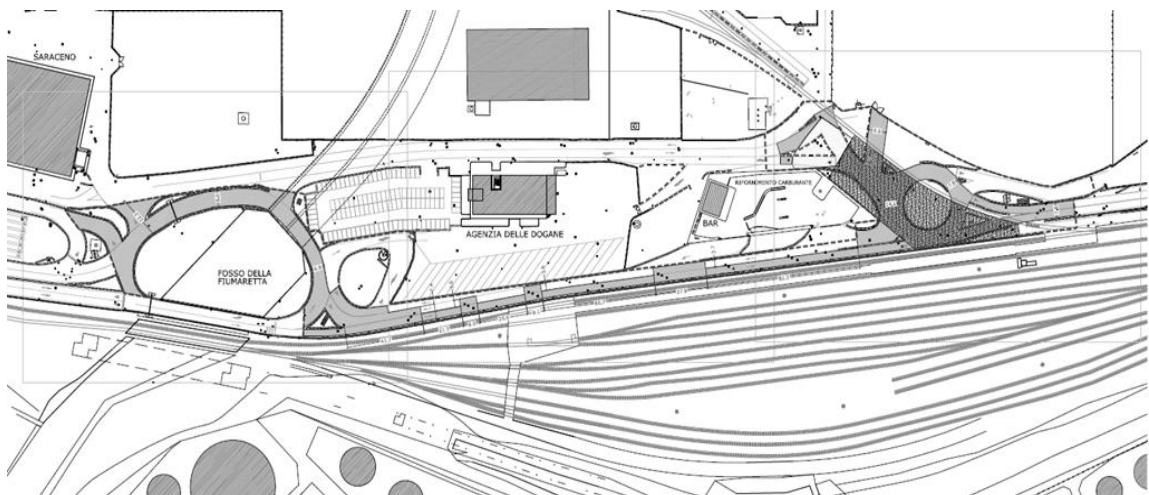
Total cost of works € 981,977.71

Preliminary design, design development and safety coordination during designing. Construction supervisor and safety coordination during construction

2016

Total cost of works € 974,389.39

Preliminary design, design development and safety coordination during designing. Construction supervisor and safety coordination during construction



HYDRAULIC ENGINEERING

5. PROJECT TO CONSOLIDATE THE DERIVATION OF PERTUSO - WATER SUPPLY INTERVENTIONS FROM THE SOURCE TO ALTIPIANI DI ARCINAZZO

Engineer Massimo Sessa Deputy Commissioner for the water crisis in the area of the municipalities served by the Consorzio per l'acquedotto del Simbrivio

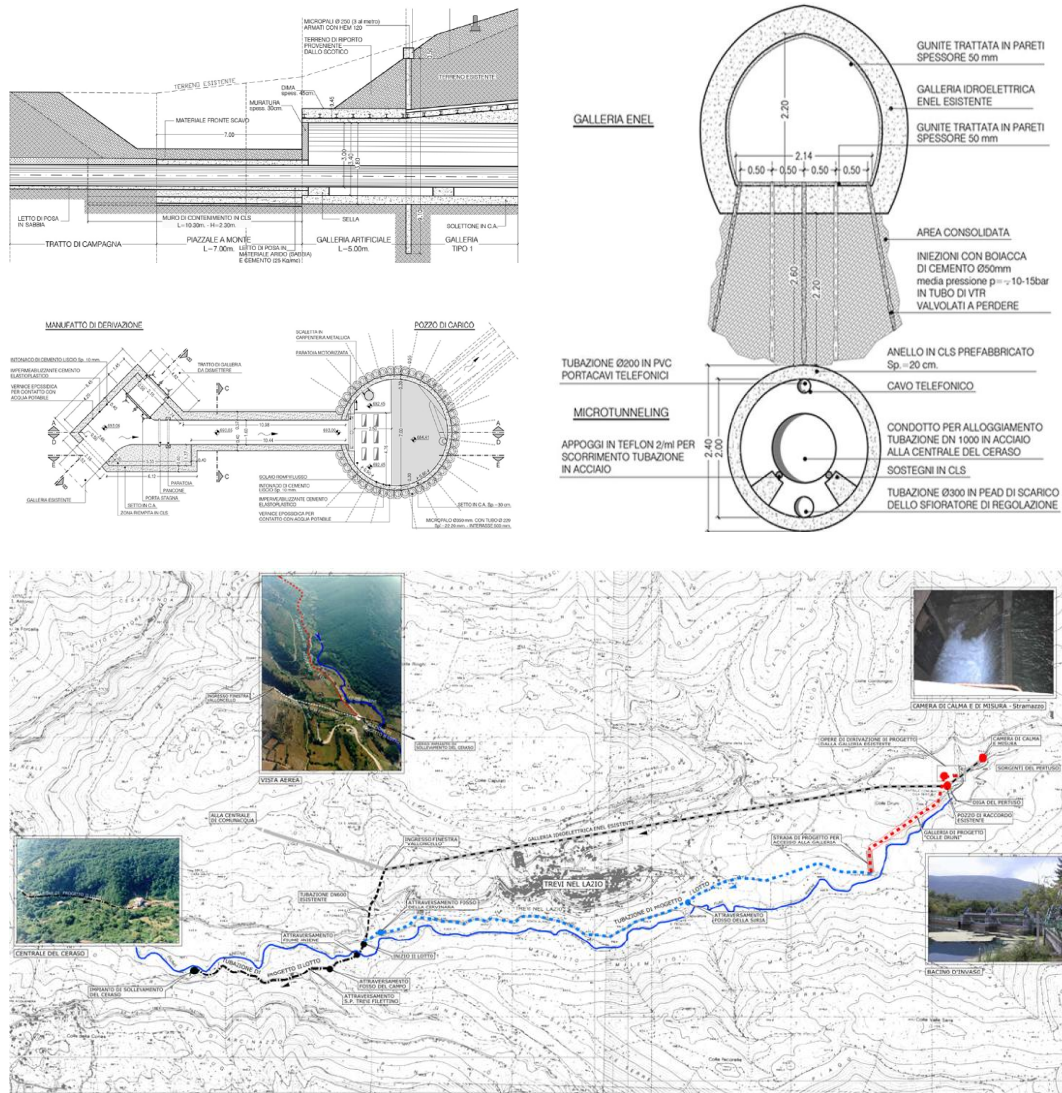
2006 - 2007

Total cost of works € 13,252,361.00

Design development

Study on environmental impacts (SIA)

Environmental effects assessment (VINCA)



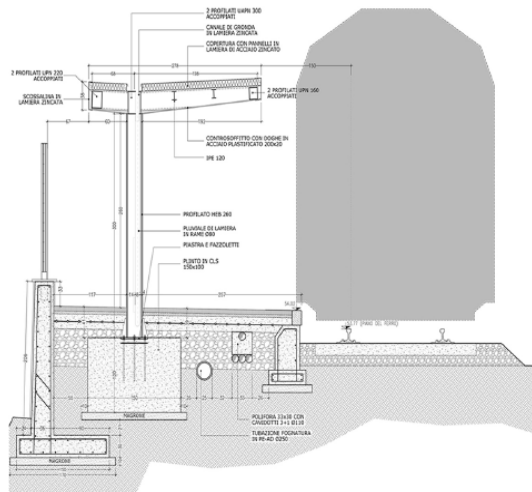
RAILWAY INFRASTRUCTURE

6. REACTIVATION AND ELECTRIFICATION OF THE FORMIA - GAETA RAILWAY LINE WITH STOPS AND INTERCHANGES

Regione Lazio - Territory Department - Regional Direction for Environment and Cooperation among Peoples - Rome 2010

Total cost of works € 18,466,566.13

Design development for integrated contract (design and construction)



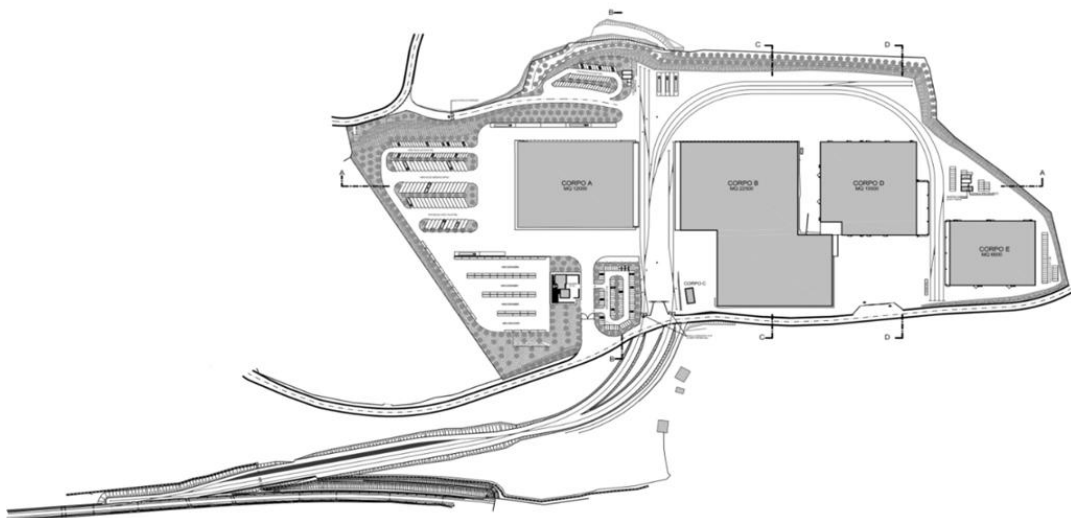
7. RAILWAY CONNECTION KM 1+109,54 ROMA - CASSINO RAILWAY LINE, ANAGNI

Consorzio Servizi CAR.ME.SI- CAR. ME.

2000-2005

Total cost of works € 12,5 millions

Preliminary design, design development, construction design. Construction supervisor and safety coordination during designing, construction supervisor and safety coordination during construction, Environmental impact assessment (VIA)



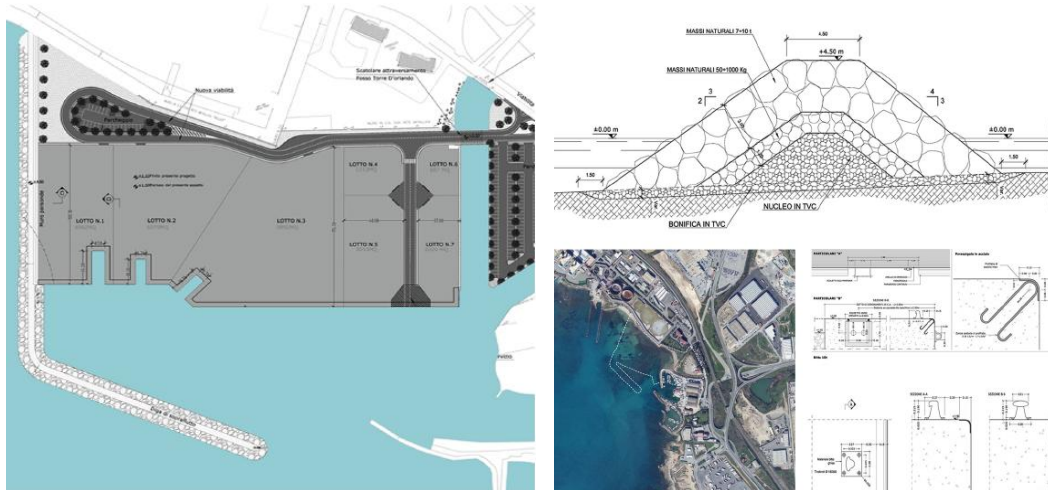
PORT

1. STRATEGIC WORKS FOR THE PORT OF CIVITAVECCHIA: EXTENSION OF THE COLOMBO BREAKWATER, RO-RO DOCK, SERVICES DOCK – RELOCATION OF THE SHIPYARDS LOCATED IN THE BUCA DI NERONE AREA

Port Authority of Civitavecchia, Fiumicino and Gaeta
2014

Total cost of works € 11,939,100.00

Preliminary design



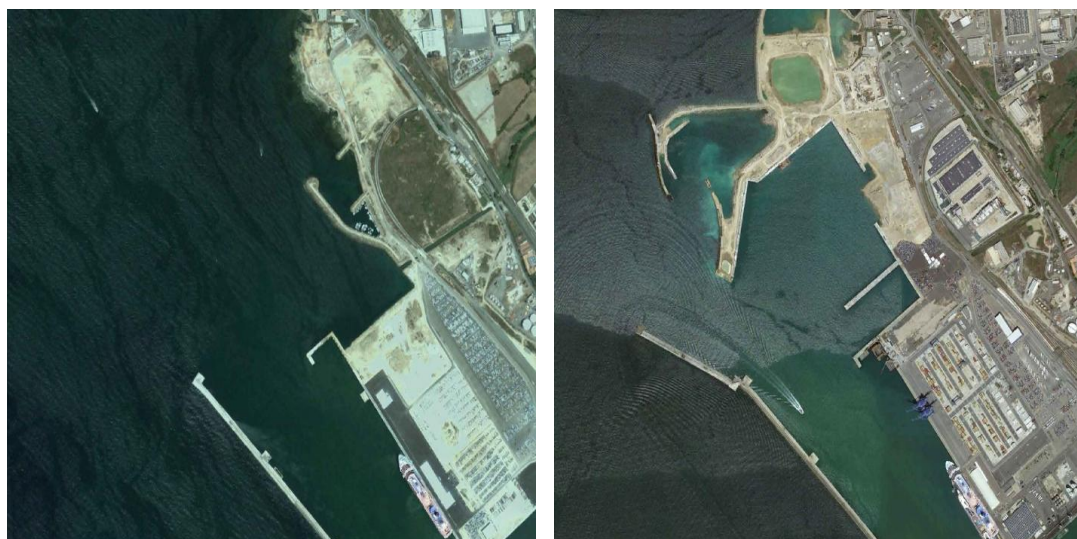
2. STRATEGIC WORKS FOR THE PORT OF CIVITAVECCHIA: EXTENSION OF THE COLOMBO BREAKWATER, RO-RO DOCK, SERVICES DOCK

Port Authority of Civitavecchia, Fiumicino and Gaeta
2012 - in progress

Total cost of works € 158,281,268.45

Construction supervisor and safety coordination during construction. Construction design - Variance draft

Total cost of works € 188,850,016.02



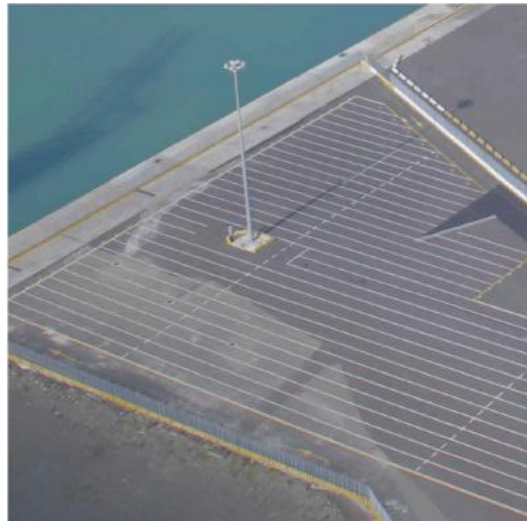
3. STRATEGIC WORKS FOR THE PORT OF CIVITAVECCHIA: COMPLEMENTARY WORKS OF THE SQUARES BEHIND DOCKS 27 AND 28 - RO-RO TERMINAL CONSTRUCTION

Port Authority of Civitavecchia, Fiumicino and Gaeta

2013 - in progress

Total cost of works € 2,298,673.84

Construction design and safety coordination during designing. Construction supervisor and safety coordination during construction



4. STRATEGIC WORKS FOR THE PORT OF CIVITAVECCHIA: EXTENSION OF THE COLOMBO BREAKWATER, RO-RO DOCK, SERVICES DOCK - SUPPLEMENTARY WORKS FOR THE NORTH DREDGING RECLAMATION AREA

Port Authority of Civitavecchia, Fiumicino and Gaeta

2012- in progress

Total cost of works € 8,924,123.59

Construction design and safety coordination during designing. Construction supervisor and safety coordination during construction

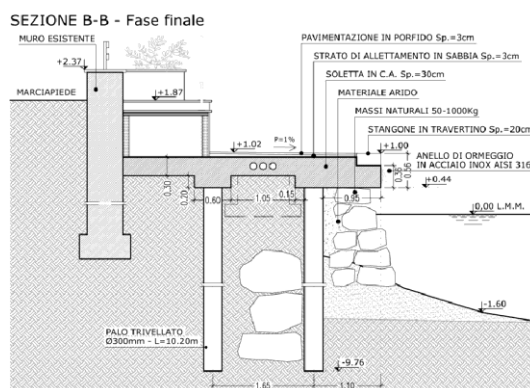


5. REDEVELOPMENT WORKS OF THE MONTESECCO DOCK, GAETA

Port Authority of Civitavecchia, Fiumicino and Gaeta
2011

Total cost of works € 199,793.29

Preliminary design, design development, construction design and safety coordination during designing



6. MARINA DI GAETA

Marina di Gaeta

2011 - in progress

Total cost of works € 45,921,462.42

Design development

Study on Environmental Impacts (SIA)



7. ROMA MARINA YACHTING, CIVITAVECCHIA

Roma Marina Yachting S.r.l.

2016

Total cost of works € 9,999,000.00

Preliminary design



8. PORT AUTHORITY OF CIVITAVECCHIA, FIUMICINO AND GAETA

2011

Technical and Functional Modernisation of the Commercial Port of Gaeta

Total cost of works € 8,779,747.89

Preliminary design and development design

2009

Preliminary project "Relocation of nautical and shipbuilding activities" - (Port of Gaeta)

Total cost of works € 59,282,375.00

Preliminary design

2009

Preliminary project "Construction of the cruise liner Terminal area" - (Port of Gaeta)

Total cost of works € 45,411,250.00

Preliminary design

2009

Preliminary project "Modernisation of Porto S. Salvo" - (Gaeta)

Total cost of works € 9,071,185.00

Preliminary design

2009

Preliminary project "Passenger port of Molo S. Antonio" - (Gaeta)

Total cost of works € 22,012,750.00

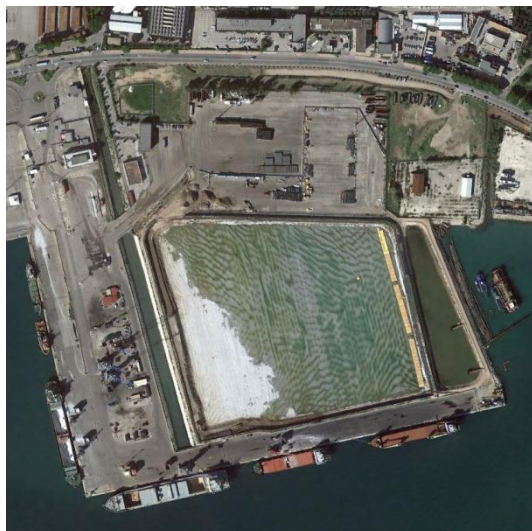
Preliminary design

2009

Preliminary project "Expansion of Molo Caboto" - Gaeta

Total cost of works € 386,472.50

Preliminary design



9. PIANI PARTICOLAREGGIATI DEL PRG CONSORTILE, GAETA

Consorzio per lo Sviluppo Industriale Sud Pontino

2015 - in progress

Drafting of the following detailed plans:

PUOC (Consortium urban operational plan) with PIP (production site plan) value Art. 39 Regional Law no. 38/99 and subsequent amendments in relation to the areas indicated on the floor plans attached sub A:

PUOC central Eni area, which extends for approx. 47 hectares;

PUOC northern Eni area, which extends for approx. 16 hectares.

Activity carried out as ATI (temporary association of companies) - Rogedil Percentage 30%

Coordination of the Detailed Plans already drawn, areas for a total of 70 hectares

